

thermal transfer printer-cutter

DC4



Summa DC4

54-inch contour-cutting sign printer



Vibrant outdoor graphics, die-cut and ready-to-apply

Installation-ready outdoor graphics, whenever you want, with an odor-free, zero-maintenance, instant-drying technology: that's the beauty of thermal transfer printing. And in the world of thermal transfer, **Summa DC4** reigns supreme.

In fact, no other thermal transfer printer even comes close.

At 54 inches, it's the world's widest thermal transfer printer and over four times wider than our nearest competitor.* An 8 ribbon auto-changer eliminates manual ribbon changes, allowing unattended printing of up to 627.5 square feet. Variable width and un-punched vinyl handling makes it the most versatile thermal transfer printer on the planet. Plus, super-accurate contour cutting is built in.

When we designed our fourth generation DC-class printer, we did more than just make it wider. We added a host of other innovations, including: variable width media from 24 to 54 inches to increase your media choices and your bottom line; High-resolution mode (304 x 609 dpi) for great-looking photos and ultra crisp text; and Double-density mode for back-lit images that are amazingly rich and vibrant.

Best of all, **Summa DC4** is a complete wide format print-and-cut solution for just \$19,995 (US list). If you own a PC, there's literally nothing else to buy. **ColorControl**, our super fast RIP-and-cut software, comes with it, including free updates for life. Power supply and take-up rollers are standard, as is a media basket for shorter runs. Plus you get starter supplies, including 8 universal ribbon cassettes, a full set of CMYK resin ribbons and a 54-inch by 50-yard roll of high-performance 3M vinyl.

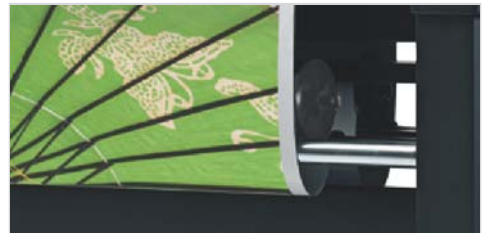
If you're in the market for a printer that produces a single graphic as effectively as long runs. If you want odor-free, zero-maintenance printing that even outlasts harsh solvent inks. And if you want durable print-and-cut graphics, instantly, **Summa DC4** is the one printer that does it all. For more information, please visit our Web site at: www.summa.us/go/dc4



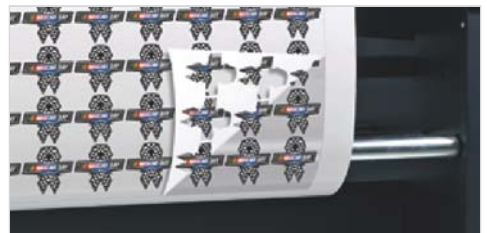
The built-in ribbon-changer holds up to 8 high-capacity SmartRibbon™ cassettes. Each cassette can accommodate any ribbon color, and the printer intelligently identifies the ribbon color, location and usage.



The OptiPrint™ media pre-cleaning system removes dust and debris that can cause image flaws. It delivers optimal print quality in a unique process that cleans the media immediately before the color pass is printed.



Our media roll flanges work with the supply and take-up rollers. They attach to any width roll in seconds. Or with shorter print-run, the standard media baskets keep your prints clean and organized.



With super-accurate contour cutting built in, plus the most durable print technology you can buy, you simply need to print, weed and apply.

Installation-ready images simple as 1-2-3

1: Print



2: Weed



3: Apply

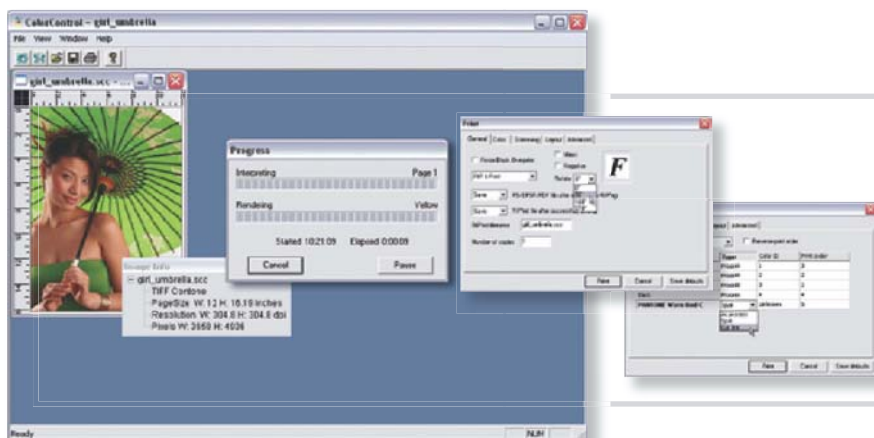


Success Made Simple

Using the industry's most durable color printing



Images courtesy Reid Signs, Inc. © 2006 Reid Signs, Inc. Taco Del Mar and the Taco Del Mar Logo are registered trademarks of Taco del Mar Franchising Corp.



Summa Color Control RIP Software

ColorControl™, our exclusive PostScript® 3 compatible RIP software, is full-featured, easy-to-use and fast. Blazing-fast.

On the same computer, we ripped a 66.7 MB Photoshop EPS file (the girl with green parasol) in ColorControl, Onyx® and FlexiSIGN®. ColorControl parsed and ripped it in just 11 seconds! Onyx took over 2 minutes and FlexiSIGN took over 1 minute. And that's just one medium-sized file.

Included with your DC4

Printer and software

- Summa DC4 54" Printer-Cutter, fully assembled and ready to roll off crate
- ColorControl software (single user dongle) with unlimited free upgrades
- Summa Printer Control software (unlimited users) with unlimited free upgrades

Accessories

- CD ROM with drivers, software and on-disc manual
- Printed manual
- Power cord
- 15-foot USB cable with cable clamps
- 4 media roll-end flanges
- OptiPrint roller refill
- 8 universal ribbon cassettes

Supplies

- Full rolls of C, M, Y, and K resin ribbons
- 54" x 150' roll of 3M 2-mil premium white vinyl

Summa

Specifications

Width	54" (140 cm)
Speed	Printing : 93 Ft 2/hour (8.7 m 2) — Spot; 34 Ft 2/hour (3.2 m 2) — Process CMY Cutting : 24 inches-per-second (600 mm/sec) max
Method	Printing : Thermal transfer, using outdoor-durable process and/or spot color resin ribbons, and; metallic gold and silver polyester ribbons (indoor use) Cutting : Drag-knife, using standard Summa D-Series blades
Resolution	Printing : 609 x 304 dpi (24 x 12 dpmm) maximum hardware; 609 x 609 apparent dpi (24 x 24 dpmm) software Cutting : 0.001" (0.025 mm), 0.005" (0.1 mm) selectable
Media width	Variable width from 24 - 54 inches (61cm - 137cm); Recommended widths: 24, 36 or 54 inches (61, 76 or 137 cm)
Production width	Printing : Up to 50.2 inches wide (127.5 cm) Cutting : Up to 50.2 inches wide (127.5 cm)
Media loading	Auto alignment system built-in
Media drive	Summa OptiTrac™ active-steering drive using variable-position traction-feed pinch rollers
Media tracking	Optical laser tracking system built-in
Media supply	Motorized media supply and take-up rollers built-in
Memory	RAM (cache): 64 MB Hard disk (reprint storage): 2 GB
Interface	USB 2.0 and Centronics parallel
Baud rate	USB 2.0: (1.5Mbps & 12Mbps); Parallel: up to 38,400 baud
File support	EPS, PDF and all generic PostScript
Power requirements	Connection: standard USA power outlet; Requirement: 100-240 Vac, 48-62 Hz, 85 VA max
Operation environment	60°F to 90°F (15°C to 32°C), 35% to 80% relative humidity, non-condensing
Dimensions	Shipping: 100.8" x 35" x 63" (256 x 88 x 160 cm); Equipment: 90.6" x 24.8" x 51.2" (230 x 63 x 130 cm)
Weight	Shipping: 800 Lbs (360 kg); Equipment: 550 Lbs (250 kg)
Warranty (USA)	Printer : 1 year parts and labor limited warranty Images : Up to 5 years, outdoors, without lamination; restrictions may apply for desert areas or exposure to harsh chemicals or abrasives.
Support policy (USA)	Unlimited toll-free technical support for the life of the equipment (transferable)

Support

As an owner of Summa equipment, you will have access to unlimited toll-free support for as long as you or anyone else owns it. In short, if a product carries our brand, we support it, with one of the most outstanding support teams in the industry. So when you choose Summa, you're choosing more than just a great piece of equipment. You're choosing a company that will stand behind you every step of the way.

For more information, contact your authorized Summa dealer.