



Gerber Omega Setup

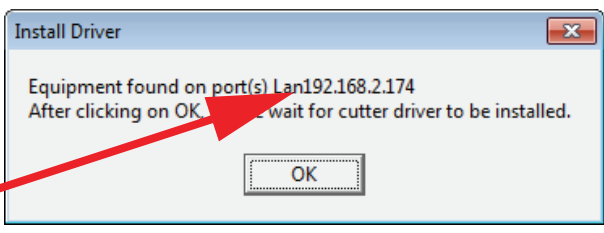
For ADSI Cutters using GSPplot via Ethernet

This document is applicable to touchscreen-equipped ADSI 536-GTS cutters (serial numbers ending in 'G') connected via ethernet and using Gerber Omega 6.5 or later with GSPplot. For other configurations refer to the following documents:

To output from Gerber via File>Print using the ADSI DirectCut Driver (USB or ethernet), refer to: <https://allendatagraph.com/techsupport/CADSoftwareNotes/GerberPrinting.pdf>

To output from Gerber via USB using GSPplot, refer to: <https://allendatagraph.com/techsupport/CADSoftwareNotes/GerberGSPplotUSB.pdf>

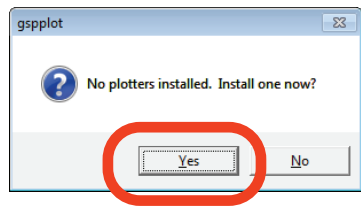
1. Before proceeding with the GSPplot setup, make sure the ADSI DirectCut driver is installed. If needed, the driver can be downloaded from our website at <https://allendatagraph.com/support/-software-support>. Follow the prompts as it finds the cutter, identifies the port, installs the driver, and executes a test cut. At the point where it has found the equipment, make note of the IP address (in this example, 192.168.2.174).



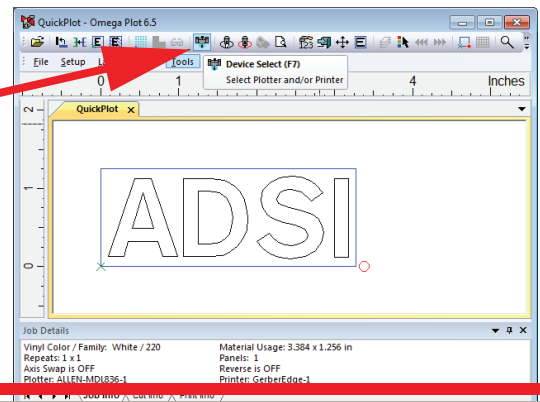
2. Open Omega and ensure it is up to date by clicking Help>Check for Updates, then following the prompts to install updates as needed.

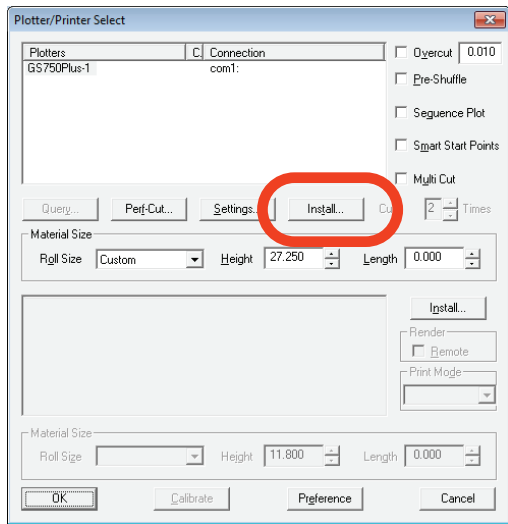
3. In order to access the gspplot setup, you will first need to have an object in the workspace to cut. This can be simply a single small character or shape. Once you have an object to cut, select File>Output All.

4a. If you have not previously had a plotter installed, you will receive the message; 'No plotters installed. Install one now?' Click 'Yes' and proceed to step 6a.



4b. If an existing plotter is installed, the QuickPlot window will open. Click on the 'Device Select' icon.



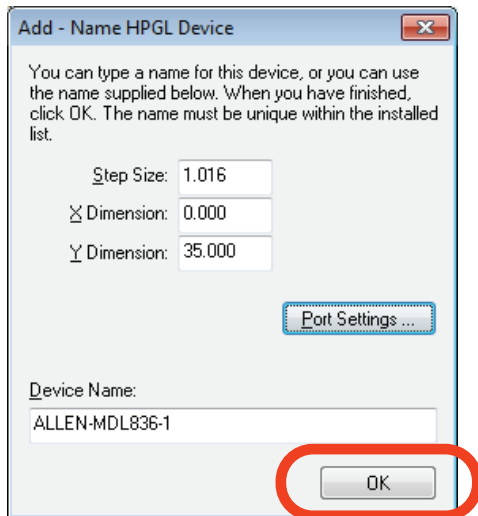
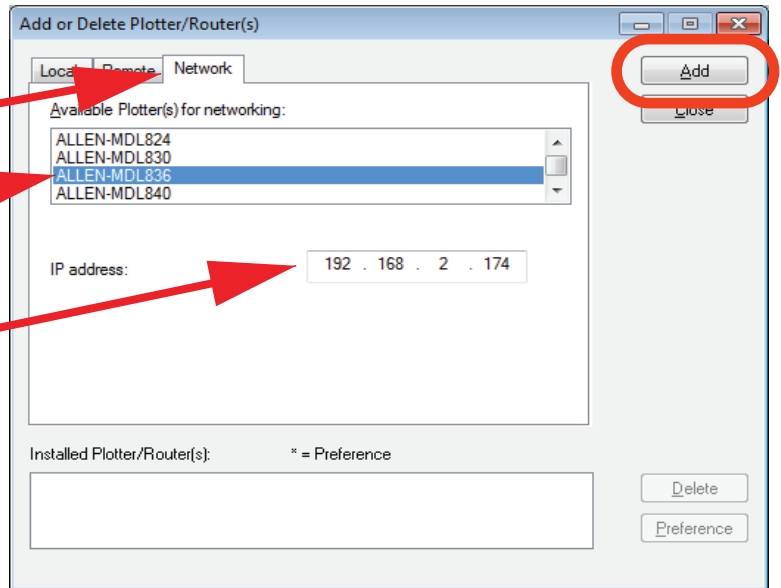


5. In the 'Plotter/Printer Select' window, click 'Install'.

6a. Click on the 'Network' tab, and from the list of available plotters, select 'ALLEN-MDL 836'

6b. Enter the IP address as recorded in step 1.

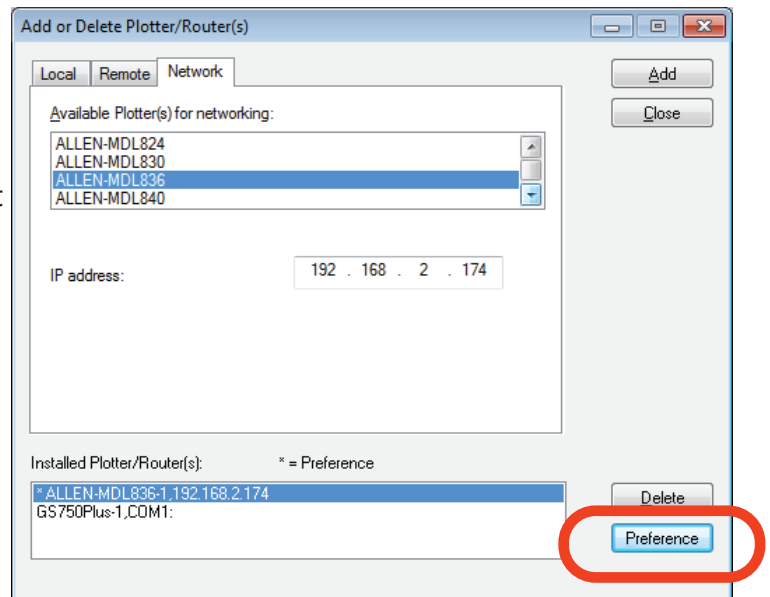
6c. Click 'Add'



7. In the 'Add/Name HPGL Device' window, rename the device if desired, and click 'Ok'.



8. In the 'Installed Plotter/Router(s)' window, select any unused devices and delete them. If others are in use, select the ADSI device and set it as '*Preference'. Click on 'close'. At this point, clicking on 'cut/pounce' in the QuickPlot window will send the job to the cutter.



Note: ADSI does not sell or support Gerber software. This information is provided to assist ADSI owners with output device setup only. For technical support on Gerber software products, go to: <http://www.gspinc.com/products/software/omega>.

Contact ADSI Technical Support @ <http://allendatagraph.com/tech-support/>



45A Northwestern Drive
Salem, NH 03079
603-216-6344
www.allendatagraph.com



All products made in The United States.
All specifications are subject to change.